

New Jersey's Honey Bees And Other Pollinators Need Your Help!



**A statewide
organization dedicated
to fostering apiculture
in New Jersey**

www.njbeekeepers.org

WHY ARE POLLINATORS IMPORTANT?

Flowers make the pollen and nectar that insects need for food. As insects travel from flower to flower in search of food, pollen brushes off on their bodies and is transferred from one flower to another. This process is called pollination, and the insects and animals who do this important job are called pollinators.

Bees, flies, beetles, wasps, butterflies—even hummingbirds and bats—they're all part of nature's army of pollinators. Without them, about 85% of all plants would be unable to produce seeds or fruit.

In fact, pollinators are responsible for one out of every three bites of food we eat!



PROBLEMS FACING ALL POLLINATORS

Across the United States, and especially in New Jersey, the increase in development has decreased the plants and habitat that are critical to the survival of our pollinators. This reduction in food and habitat has drastically reduced pollinator populations.

Widespread use of pesticides, including herbicides and fungicides, are influencing this decline. As a result, there are not enough flowering plants for pollinators to forage from, particularly in summer and fall. That's when pollinators especially need our help, because that's when they are collecting and storing the pollen and nectar that will get them through the winter. Plants that bloom in the fall are especially important for pollinators—these include flowers in the goldenrod and aster families.

Pollinator Plants That Bloom Throughout Summer and Fall

Native New Jersey Perennials*

New England Aster



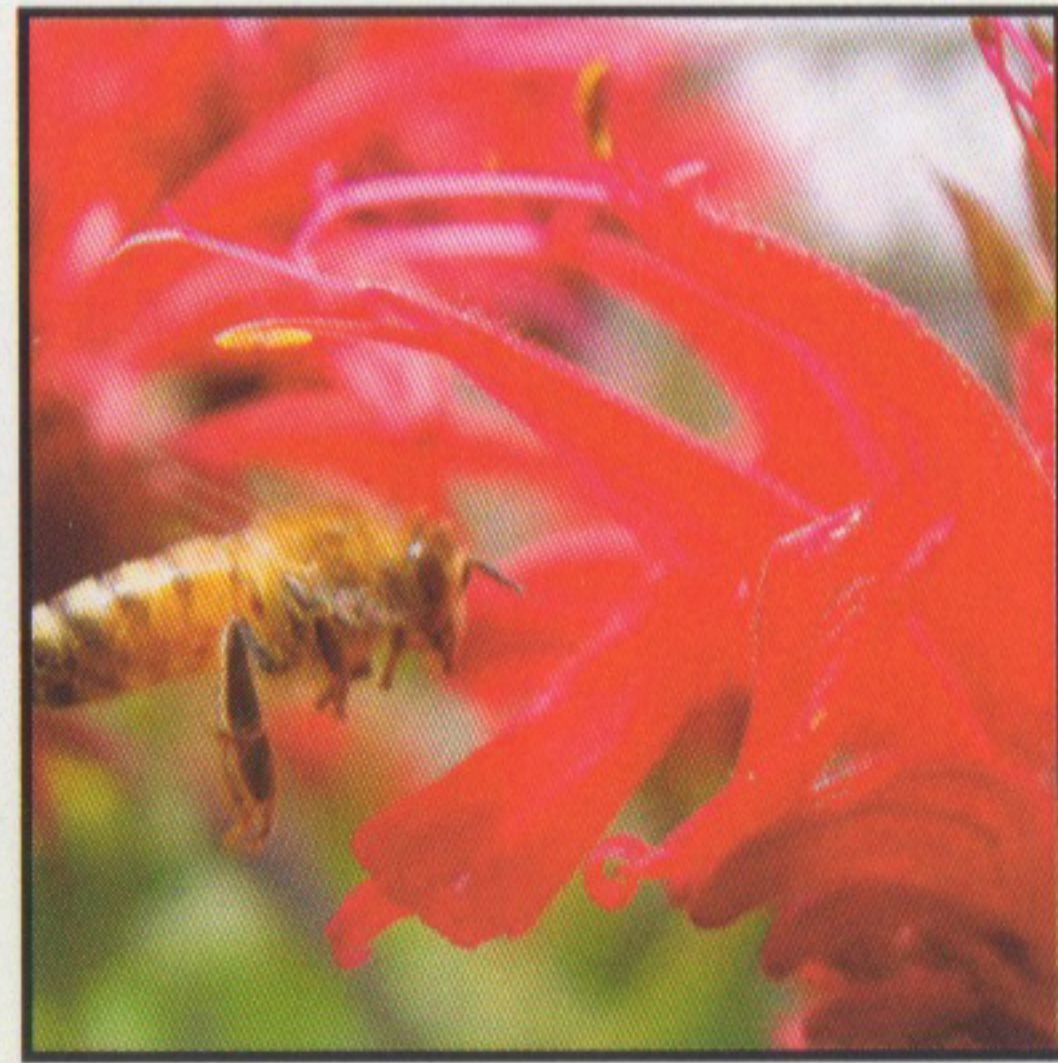
Mountain Mint



Sundial Lupine



Bee Balm



Cardinal Flower



Goldenrod



Butterfly Weed



Swamp Milkweed



Other "Pollinator Friendly" Plants

Catnip



Marigold



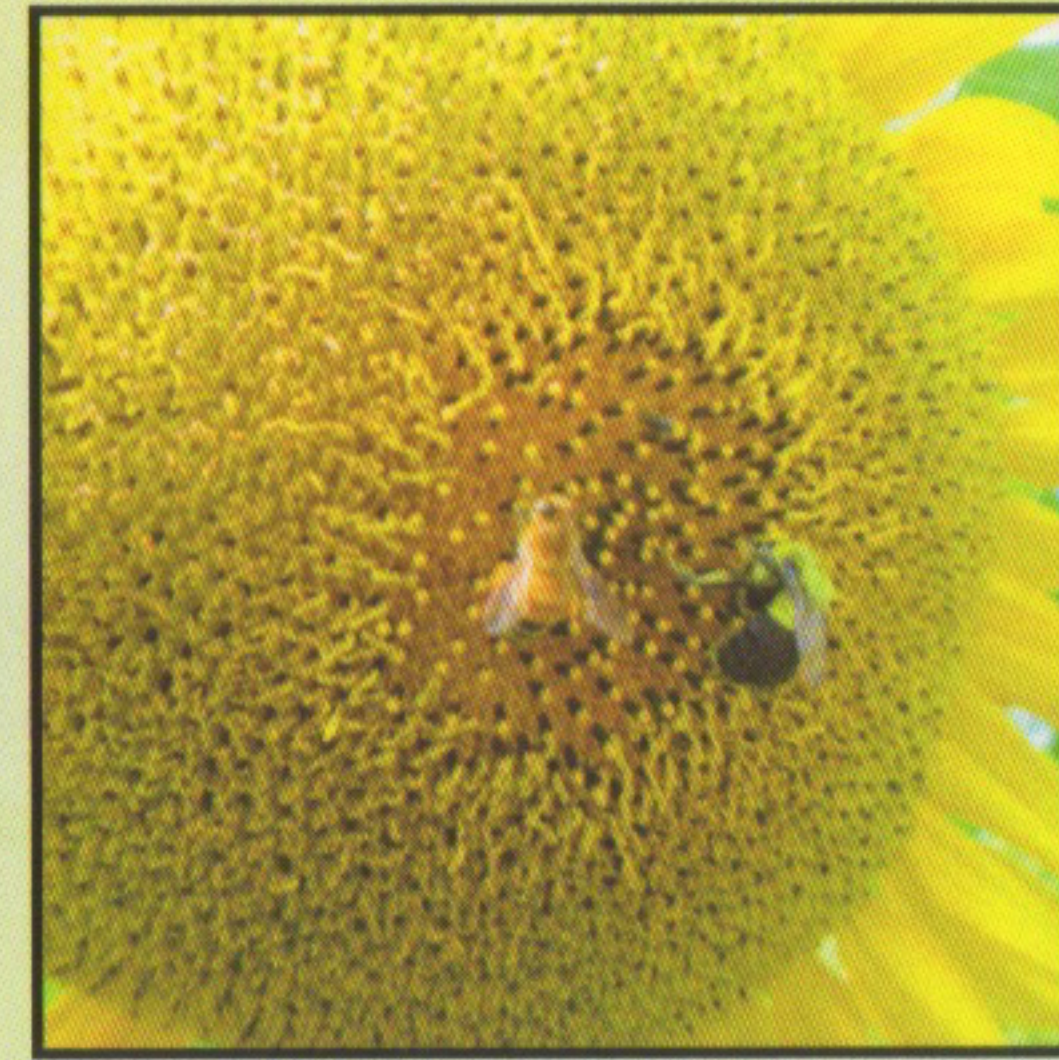
Anise Hyssop



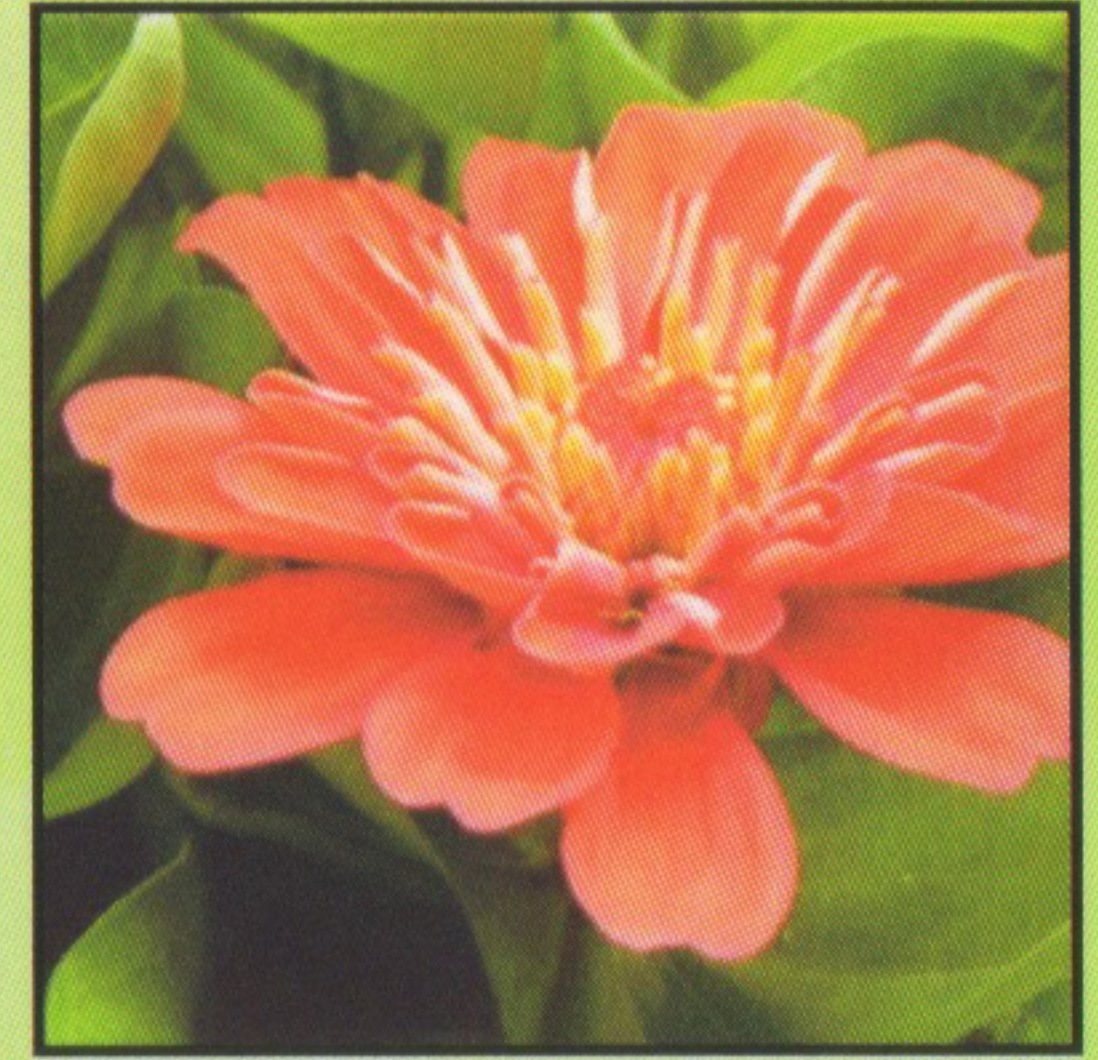
Yarrow



Sunflower



Zinnia



Spearmint



Lavender



*Perennials are plants that come back every year

HOW YOU CAN HELP

Plant a pollinator garden

- Landscape with “pollinator friendly” plants that bloom throughout the summer and fall.
- Plants that are native to New Jersey are best for supporting local pollinators.

Limit or eliminate pesticides and herbicides in your garden

- Pesticides and herbicides are extremely harmful to all pollinators, and may contribute to Colony Collapse Disorder (CCD).

Advocate for permanent pollinator gardens in our public spaces

- Attend town meetings and contact your legislators.
- Voice your opinion about the importance of making pollinator gardens a permanent part of our public landscape.

Supply clean water

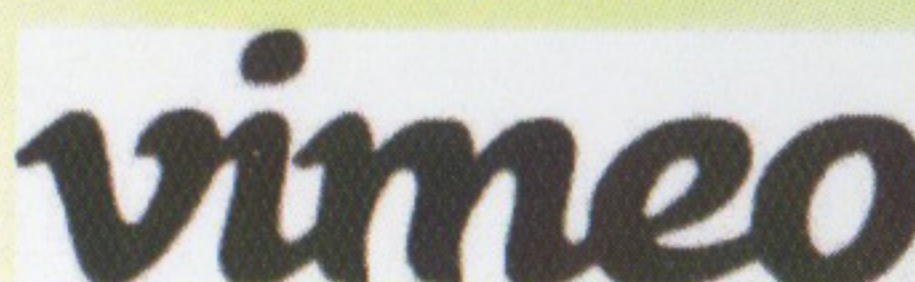
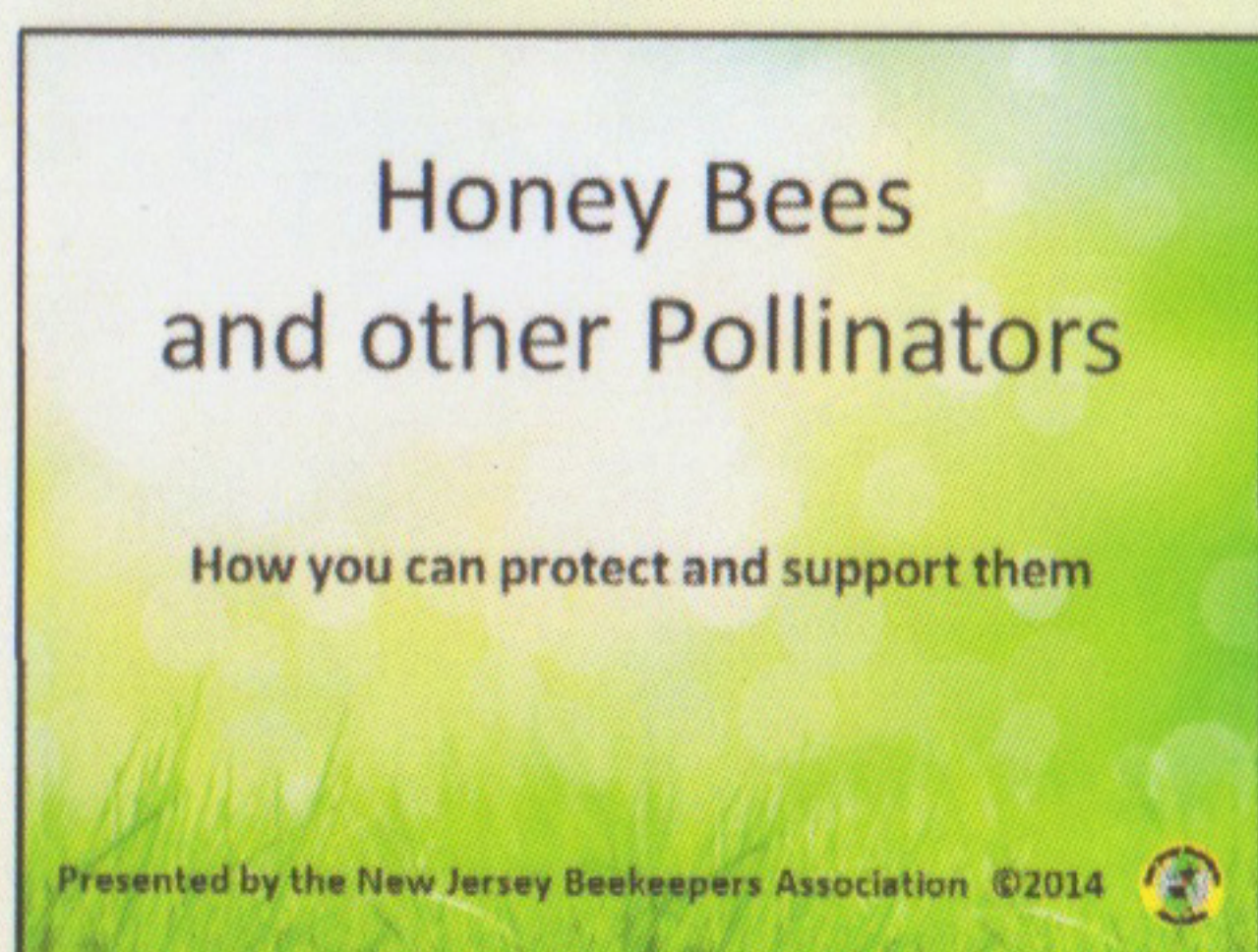
- Use a birdbath, or even a shallow bowl.
- Change water often to avoid breeding mosquitoes.
- Supply sticks, corks, rocks or pebbles to prevent your pollinators from drowning.



FOR MORE INFORMATION

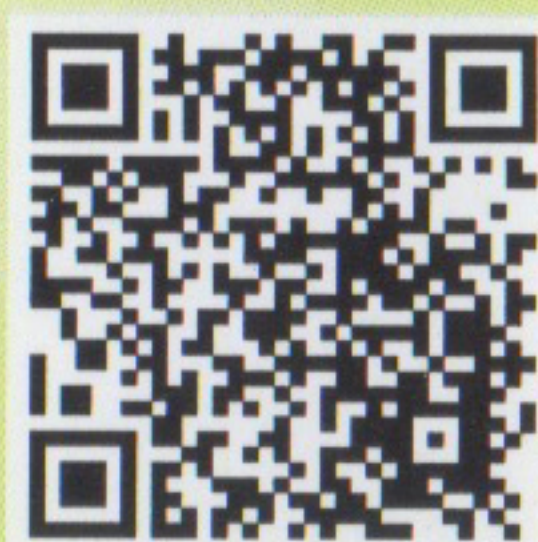
View our video for more information about how you can help honey bees and other pollinators:

Online at <http://vimeo.com/105235755>



Visit our website for more on supporting honey bees and other pollinators:

[http://www.njbeekeepers.org/
Education/supportingourhoneybees.htm](http://www.njbeekeepers.org/Education/supportingourhoneybees.htm)



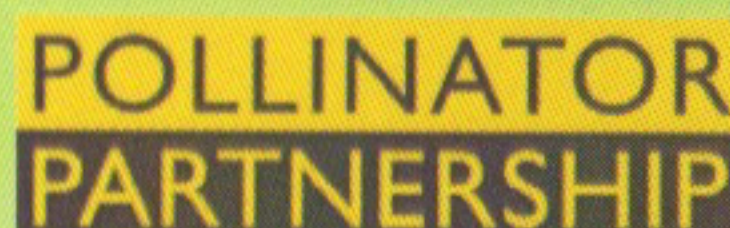
Create your very own bee sanctuary:

<https://xerces.org/bring-back-the-pollinators>



Gardening for pollinators:

[https://www.pollinator.org/
learning-center/gardens](https://www.pollinator.org/learning-center/gardens)



For questions, or to request a speaker on this important topic, please email:

BeePlants@njbeekeepers.org

